

7-77

201802

**Assembly
Square**

118 pcs



Aufbau- anleitung

**Modell 201802
TESCAN S8000G**



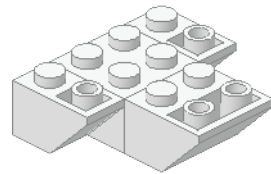
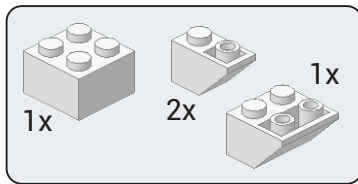
**Neue Ideen
entwickeln &
vorantreiben**
mit TESCAN

TESCAN S8000G

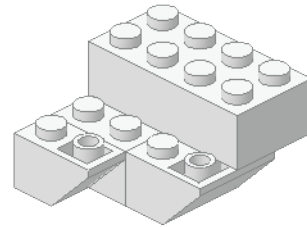
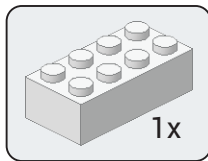
BrightBeam™ Elektronensäule

Dunkelgraue Steine (Seite 7/8) sind extra gekennzeichnet.

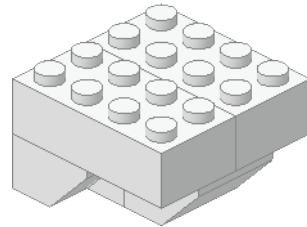
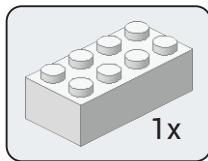
1



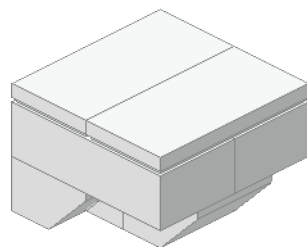
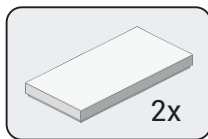
2



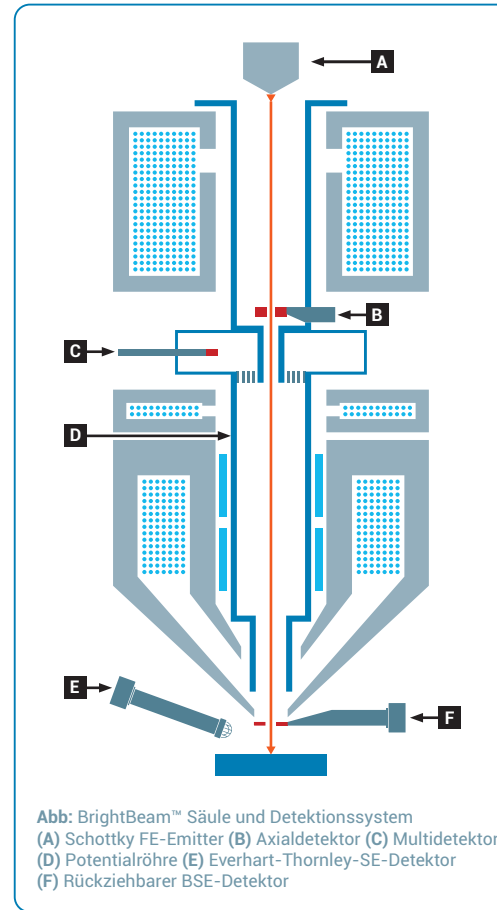
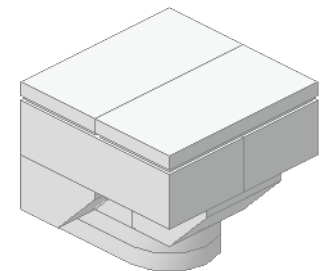
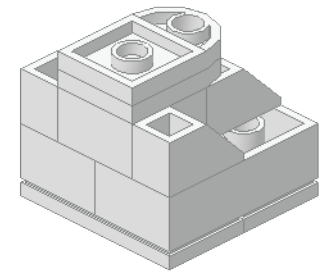
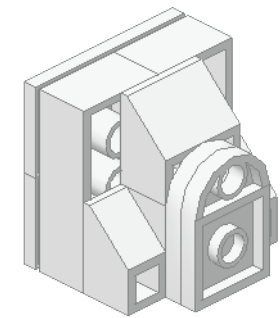
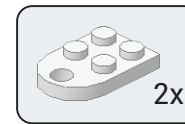
3



4



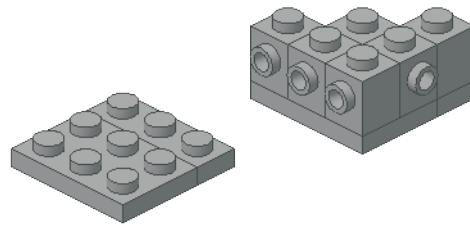
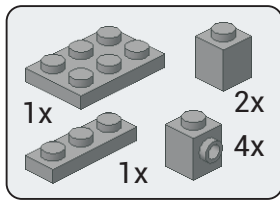
5



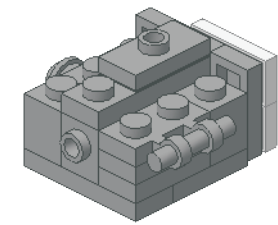
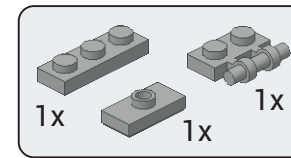
GM-Kammer

Dunkelgraue Steine (Seite 7/8) sind extra gekennzeichnet.

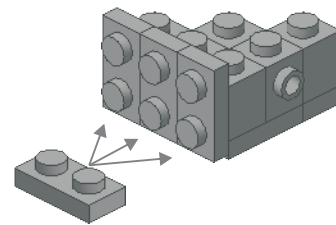
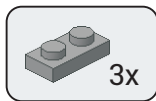
1



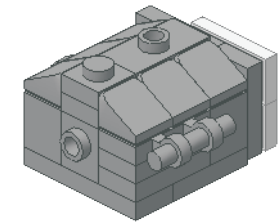
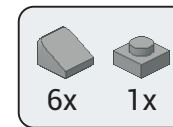
5



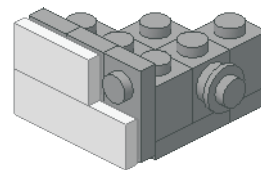
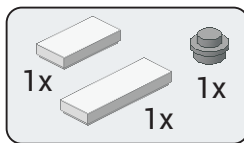
2



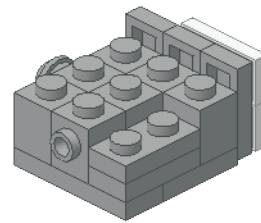
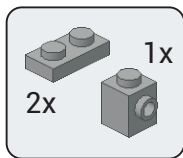
6



3



4



GM-Kammer

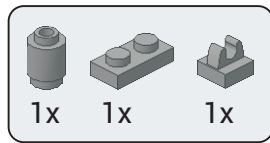
Probentisch

Innengröße	340 mm (B), 315 mm (T)
Türbreite	340 mm (B), 320 mm (H)
Ports	20+
Dämpfung	aktive Schwingungsdämpfung integriert
Typ	compuzentrisch
Bewegungen	X = 130 mm - motorisiert Y = 130 mm - motorisiert Z = 90 mm - motorisiert
Rotation	360° kontin. - motorisiert
Kippung (Tilt)	-60° bis +90° - motorisiert
Probenhöhe	137 mm max.

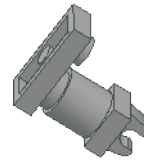
Orage™ FIB-Säule und Detektor

Dunkelgraue Steine (Seite 7/8) sind extra gekennzeichnet.

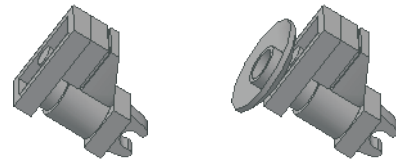
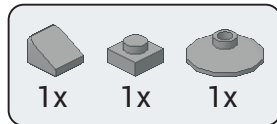
1



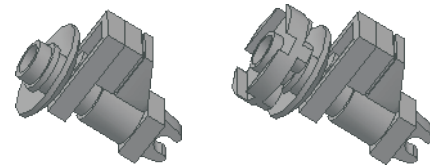
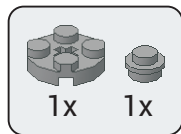
Orage™
FIB-Säule



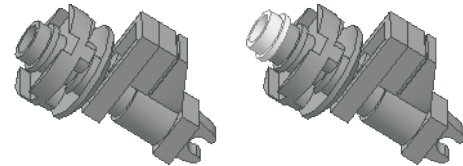
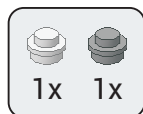
2



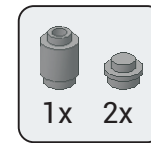
3



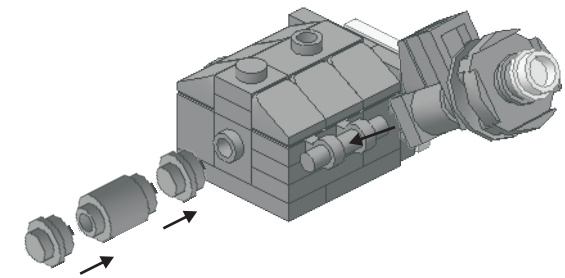
4



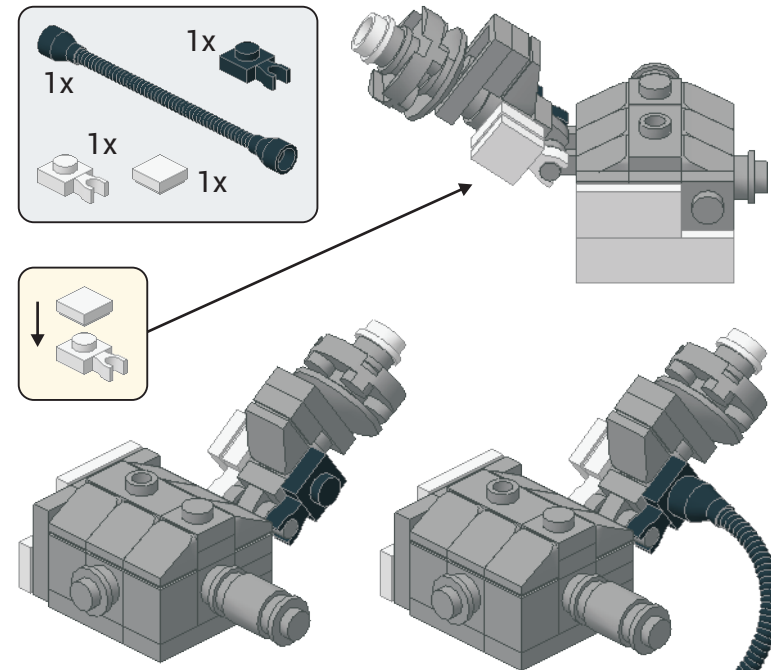
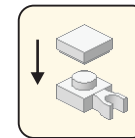
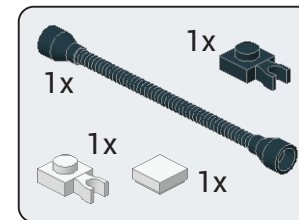
5



Detektor



6

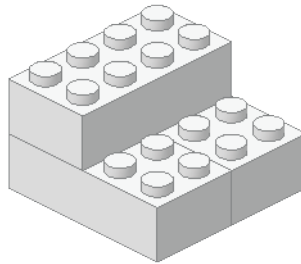
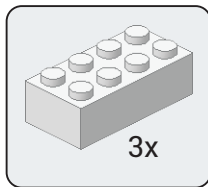


Wird später mit dem Unterbau verbunden.

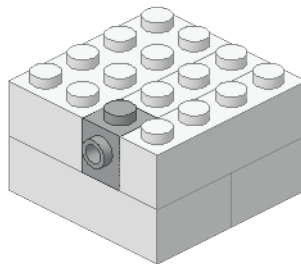
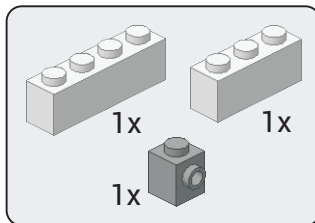
Unterbau

Dunkelgraue Steine (Seite 7/8) sind extra gekennzeichnet.

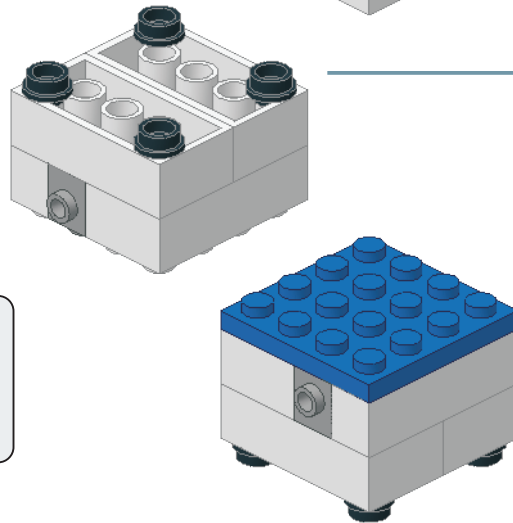
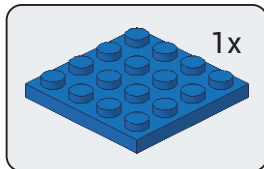
1



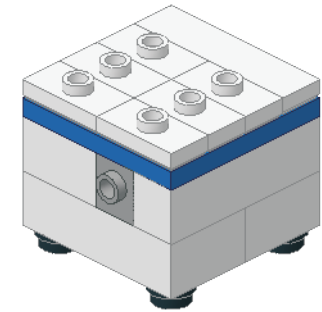
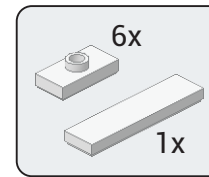
2



3

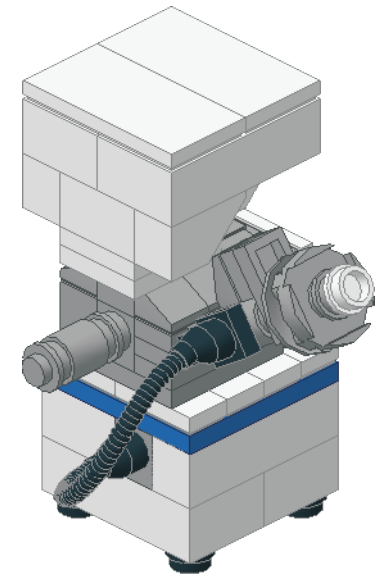
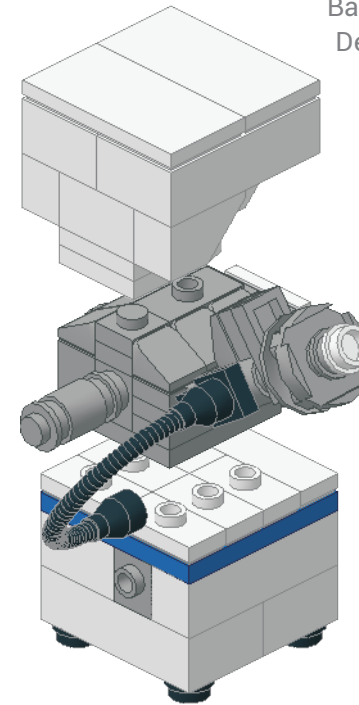


4



5

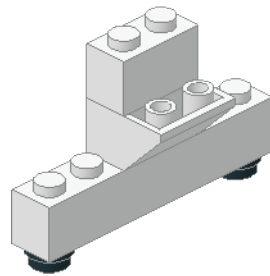
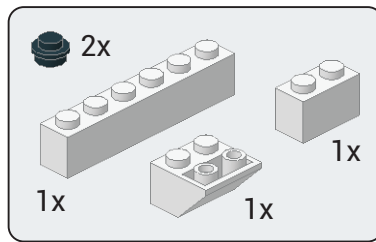
Baugruppen Elektronensäule, Kammer, Detektoren, Ionensäule und Unterbau zusammengebaut.



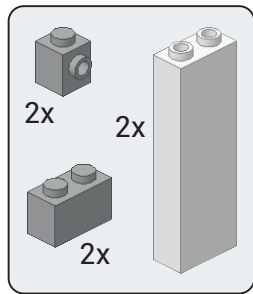
Rückwand und Bedientisch

Dunkelgraue Steine (Seite 7/8) sind extra gekennzeichnet.

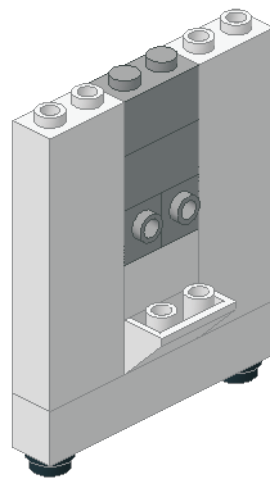
1



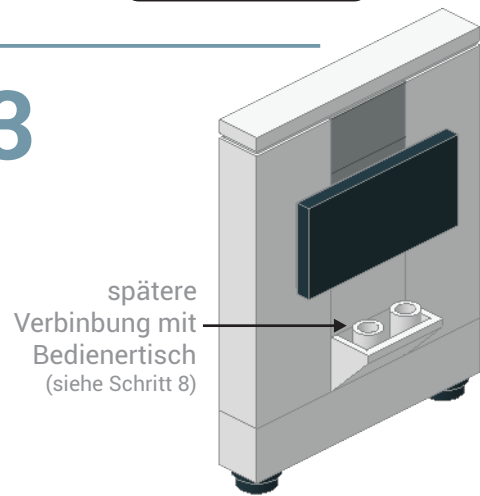
2



Rückwand

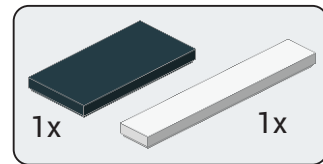


3

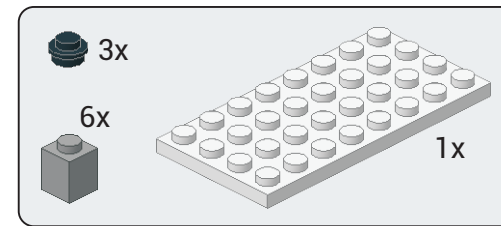


Monitor

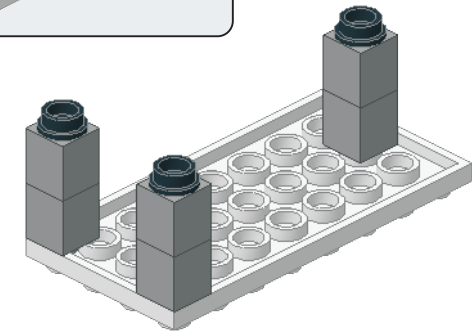
spätere
Verbindung mit
Bedientisch
(siehe Schritt 8)



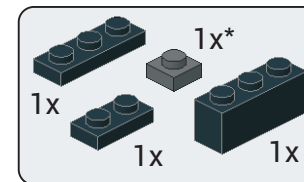
4



Bedientisch

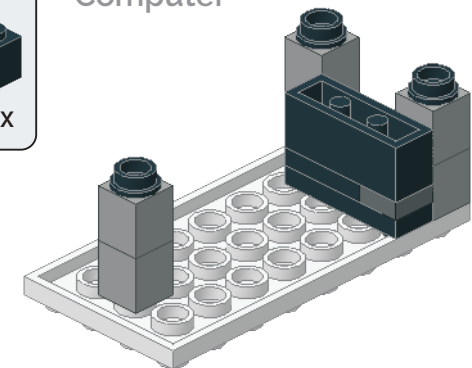
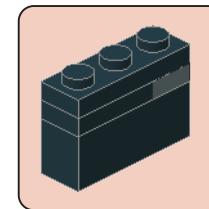


5



Computer

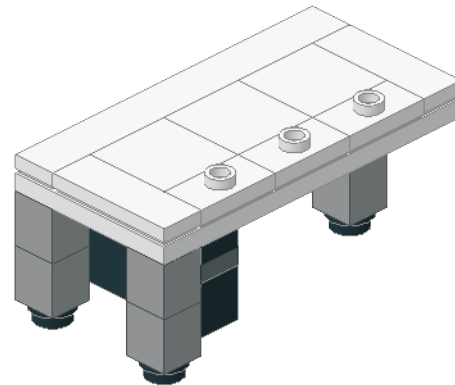
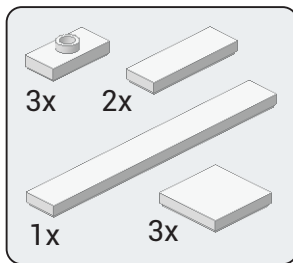
*Dunkelgrau



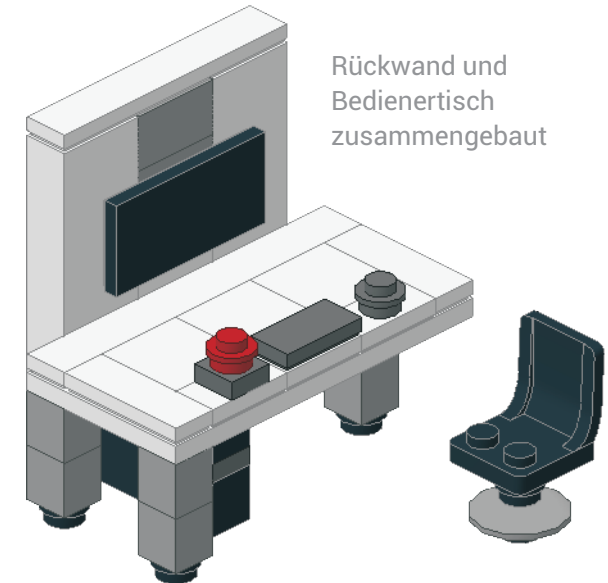
Rückwand und Bedientisch

Dunkelgraue Steine (Seite 7/8) sind extra gekennzeichnet.

6

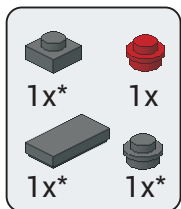


8

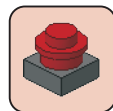


Rückwand und
Bedientisch
zusammengebaut

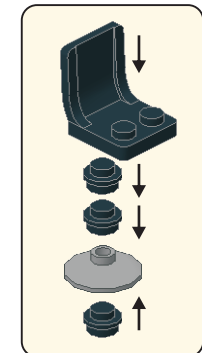
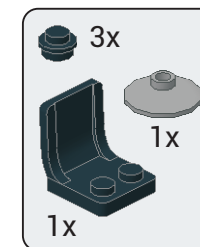
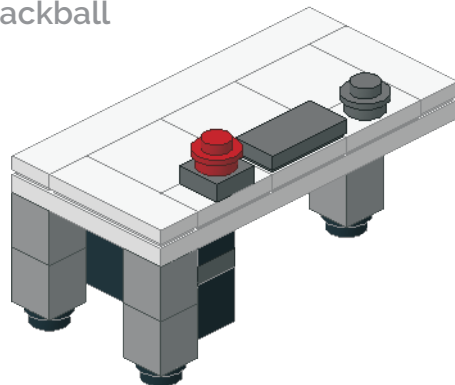
7



*Dunkelgrau

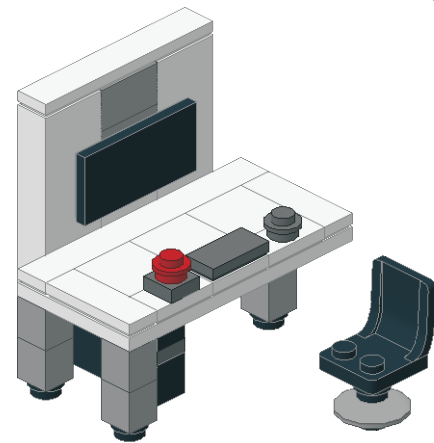
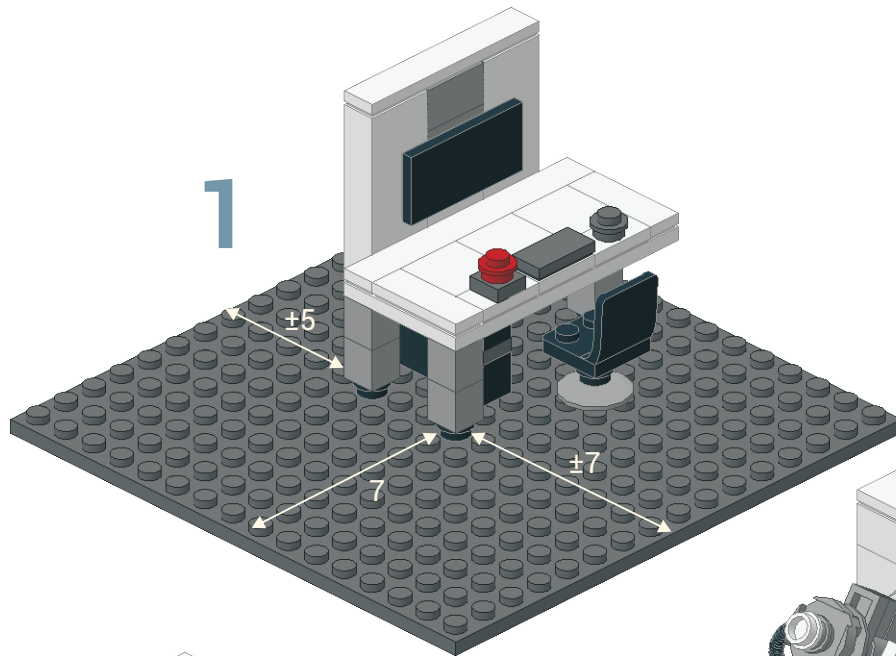


Maus, Tastatur,
Trackball

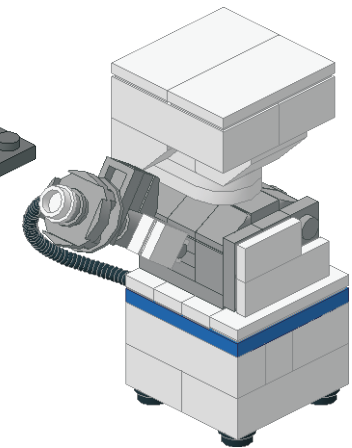
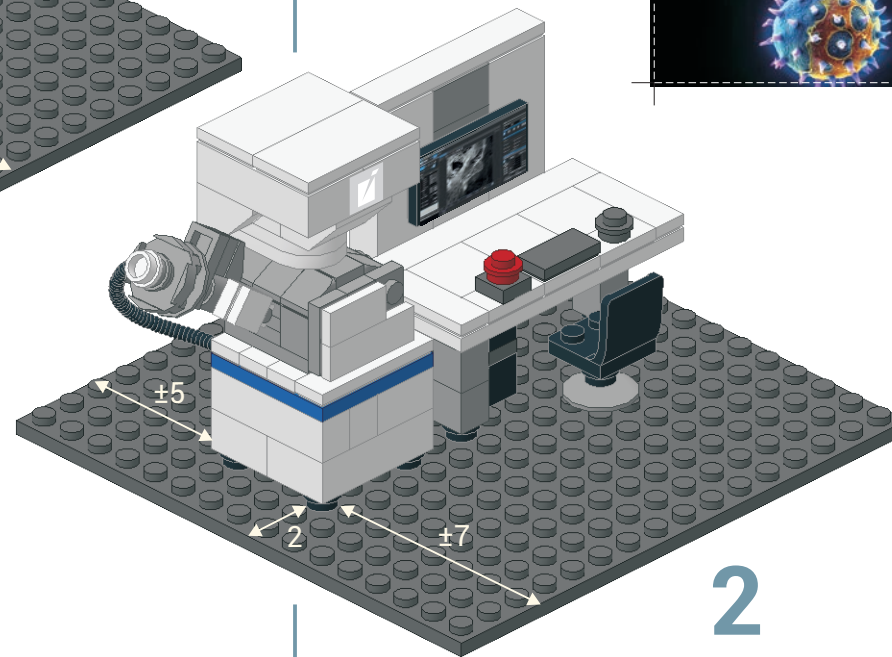
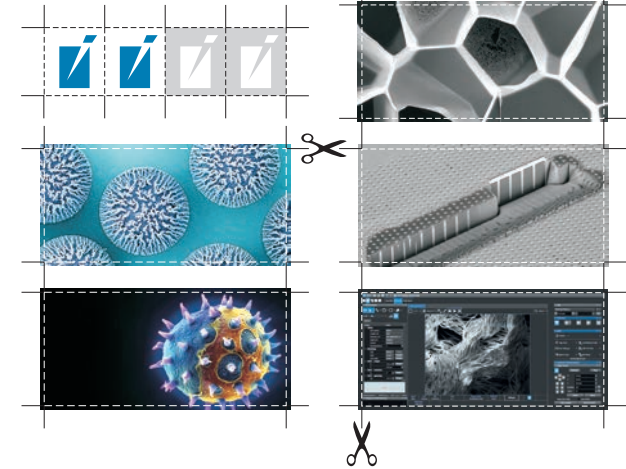


Systeminstallation

Dunkelgraue Steine (Seite 7/8) sind extra gekennzeichnet.



Aufkleber für
Elektronensäule
und Monitor
zurechtschneiden
und aufkleben



Über das Original von TESCAN

TESCAN S8000G

GA-FIB-REM mit feldfreier Ultrahochauflösung



Eine neue FIB-REM-Generation zur Erfüllung immer höherer Standards bei der Probenpräparation

Ausgestattet mit der neuentwickelten BrightBeam™ REM-Säule, liefert das S8000G feldfreie, ultrahochauflösende Abbildungen und ermöglicht die Analyse magnetischer Proben oder die REM-Überwachung des FIB-Arbeitsablaufs. Durch die Synergie mit der neuen, hochmodernen Orage™ FIB-Säule mit Gallium-Flüssigmetall Ionenquelle und das Gas-Injection-System, gehört das S8000G zur Spitzenklasse bei Probenpräparation und Nano-Patterning. Das S8000G besitzt alle Fähigkeiten, um heutigen Ansprüchen in Forschung und Industrie in vollem Umfang gerecht zu werden. Es verfügt über eine ausgezeichnete Abbildungsqualität mit hervorragendem Kontrast, was dieses System

ideal für die Nanocharakterisierung oder für komplexe, präzise Nano-Engineering-Aufgaben macht. Das S8000G bietet aufgrund seiner hochmodernen Elektronenoptik, die auf einer elektrostatisch-magnetischen Objektivlinse und einem robusten Detektorsystem aus In-Beam-Detektoren basiert, ausgezeichnete Abbildungsfähigkeiten. Das S8000G liefert feldfreie, höchstauflösende Abbildungen. Da Proben zu keinem Zeitpunkt einem Magnetfeld ausgesetzt werden, sind hochauflösende Abbildungen von Materialien aller Art, auch magnetischen, möglich. Die EquiPower™ Technologie sichert eine konstante Temperaturstabilisierung, auch bei zeitintensiven Applikationen, wie FIB-Tomographie.





TESCAN GmbH

Zum Lonnenhohl 46
44319 Dortmund
Germany
+49 231 927 360-10
vertrieb@tescan.de

www.tescan.de

TESCAN ORSAY HOLDING, a. s.

Libušina tř. 21, 623 00 Brno - Kohoutovice / Czech Republic
(phone) +420 530 353 411 / (email) sales@tescan.cz / www.tescan.com